

Recommended Design Criteria for Grade Signal Marker for 5 Inch and 6 Inch Pipe
 Reaffirmed Revised 20192025 (2 Pages)

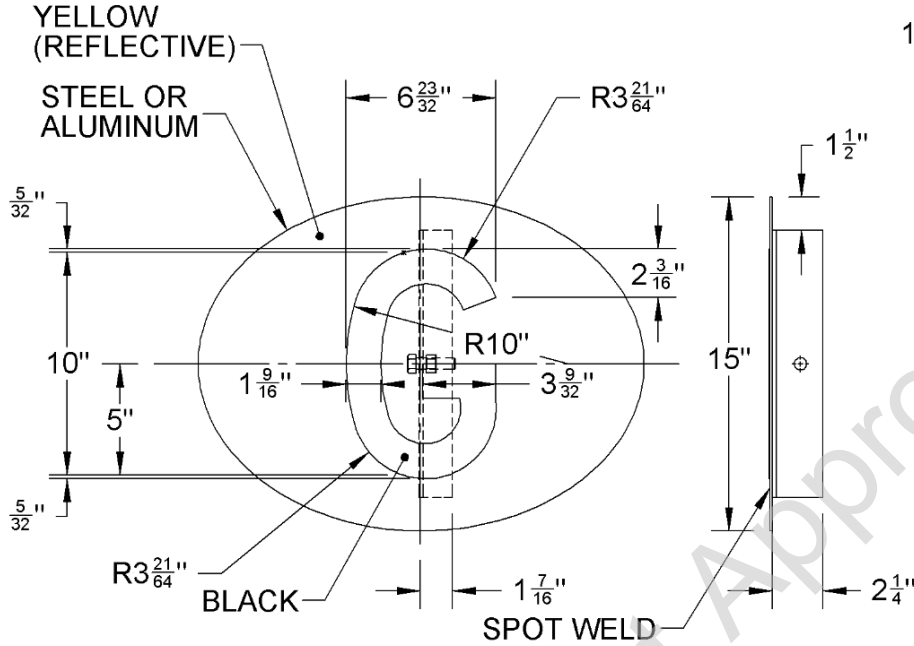


Figure 2141-1: Grade Signal Marker Only

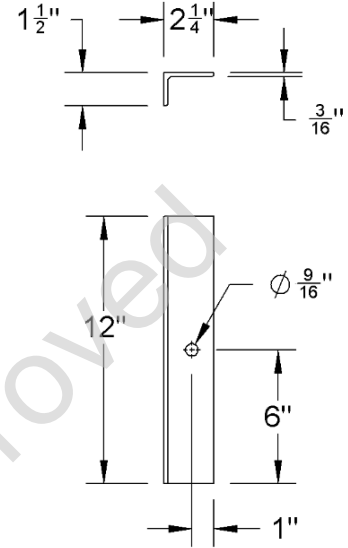
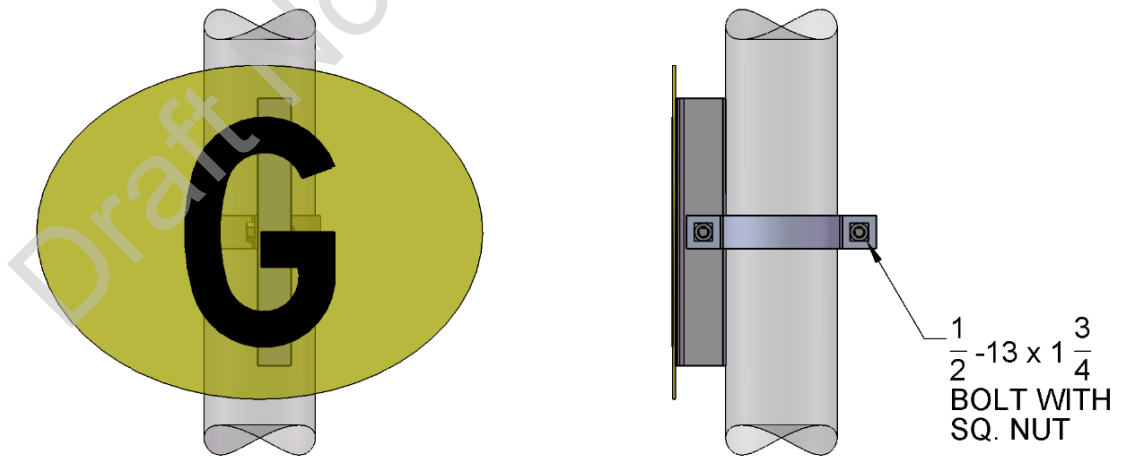


Figure 2141-2: Angle (Steel or Aluminum)



Marker Should Be Mounted On Signal Mast Below Lowest Signal Unit

Figure 2141-3: Grade Signal Marker Complete (Specify Pipe Size)

Notes:

1. Sign shall conform to Manual Part 14.6.1 Recommended Design Criteria for Signs Other Than ~~for Highway-Rail~~ Grade Crossings.
2. Bolts, nuts and threads shall conform to Manual Part 14.6.20 Recommended Design Criteria for Bolts, Nuts and Threads.
3. Steel for angle clamp and sign shall conform to Manual Part 15.1.4 Recommended Developmental Criteria for Various Types of Steel, Section 1, if applicable.
4. Aluminum for angle clamp and sign shall conform to Manual Part 15.1.5 Recommended Developmental Criteria for Various Types of Non-Ferrous Metals and Alloys, if applicable.
5. Paint and painting shall conform to Manual Part [1.5.10 Recommended Instructions for Painting and Protective Coatings](#) ~~2.4.30 Recommended Instructions for Painting, if applicable.~~
6. Retroreflective materials shall conform to Manual Part 15.2.20 Recommended Developmental Criteria and Functional Guidelines for Retroreflective Sheet Material, if applicable.
7. Colors shall conform to Manual Part 15.3.10 Recommended Developmental Criteria for Signal Colors Exclusive of Signal Glass.
8. All dimensions given in inches.